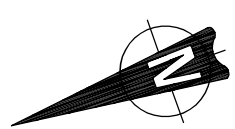


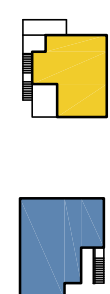
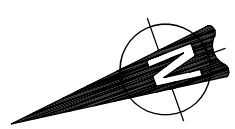
Second Floor Plan

Scale 1:200



First Floor Plan

Scale 1:200



Type 'A' [Total Area = 3,219.0 m²]

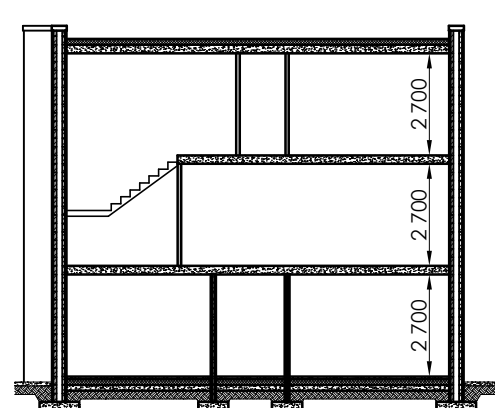
- 4 no. 3-bed [100.0 m²] Apartment nos. 130, 132, 134 & 136
- 10 no. 3-bed [94.5 m²] Apartment nos. 112, 114, 116, 118, 120, 122, 124, 126, 128 & 138
- 4 no. 3-bed [93.5 m²] Apartment nos. 131, 133, 135 & 137
- 10 no. 4-bed [150.0 m²] Apartment nos. 113, 115, 117, 119, 121, 123, 125, 127, 129 & 139

Crystic fibreglass flat roof membrane to roof

External wall to be Insulated cavity construction, insulation in accordance with Part L specification

In-situ concrete floor, insulation in accordance with Part L specification

Concrete foundations in accordance with engineers specification



Section A-A

Scale 1:200

Precast concrete suspended floors to Engineers detail

Revision	Description	Date
GLEESON MCSWEENEY		
Project	Proposed residential development at Ballykeeffe, Raheen, Limerick. For: DW Raheen Developments Ltd.	Stage Planning
Title	Apartment Building Type A	Sheet 2 of 2
Scale	1:100 @ A1	Date December 2021
Drawn	M.M.	Rev 1704-10-123
		99 O'Connell St., Limerick
		T 061 412277 E info@gleesonmcsweeney.ie